

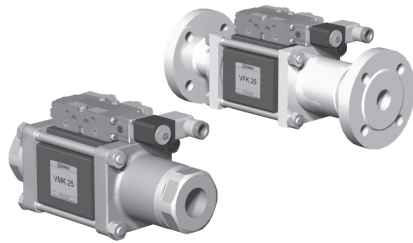
5-VMK 25

5-VFK 25

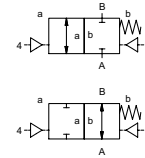
valve type with pilot valve

coaxial valve

type VMK 25 VFK 25



2/2 way valve externally controlled
pressure range PN 0-100 bar
orifice DN 25 mm
connection thread/flange
function valve normally closed symbol **NC**
 valve normally open symbol **NO**



△ Above stated body materials refer to the valve port connections that get in contact with the media only!

design pressure balanced, with spring return
body materials ① brass ② steel, galvanized
 ③ brass, nickel plated ⑤ without non-ferr. metals
 ④ steel, nickel plated ⑥ stainless steel
valve seat synthetic resin on metal
seal materials NBR PTFE, FPM, CR, EPDM

details needed for main valve

- orifice
- port
- function NC/NO
- operating pressure
- flow rate
- media
- media temperature
- ambient temperature
- type of actuation

details needed for pneumatic actuation

- nominal voltage
- type of protection
- actuation pressure range min/max
- low wattage coil, actuation pressure range 4-7 bar
- pilot valve type

details needed for hydraulic actuation

- actuation pressure range min/max
- hydraulic control valve function

	general specifications	options
ports	VMK threads G 1 - G 1 1/2 VFK flanges PN 16/40/100	special threads special flanges
function	NC	NO
pressure range	bar 0-16/0-40/0-64/0-100	> 100 bar upon request
Kv value	m ³ /h 13,3	
vacuum	leak rate	< 10 ⁻⁶ mbar·l·s ⁻¹
pressure-vacuum	P ₁ ↔ P ₂	pressure side max. 100 bar vacuum side leak rate < 10 ⁻⁶ mbar·l·s ⁻¹
back pressure	P ₂ > P ₁	available (max. 16 bar)
media	gaseous - liquid - highly viscous - gelatinous - pasty - contaminated	available (max. 16 bar)
abrasive media		version available
damping	opening closing by throttles on pilot valve	
flow direction	A ↔ B as marked	bi-directional upon request
switching cycles	1/min 200	
switching time	ms opening 50-3000 closing 50-3000	
media temperature	°C direct mounted pilot valve 60	remote mounted pilot valve outside temper-
ambient temperature	°C direct mounted pilot valve 50	ature range of media max.160°C
flush ports		available
leak ports		available
limit switches		inductive/mechanical upon request
manual override	via pilot valve	
approvals		LR/GL/WAZ
mounting		mounting brackets
weight	kg VMK 6,7 VFK 9,0	
additional equipment		upon request

electrical specifications

	options
nominal voltage	special voltage upon request
power consumption	special voltage upon request
protection	
energized duty rating	
connection	
additional equipment	
optional	
max. temperature	
explosion proof	

pneumatic specifications

	options
actuation pressure range	bar 4-10
air consumption	cm ³ /stroke 18
cycle speed	main valve speed variable by throttles on pilot valve
control	preferably 5/2-way pilot valve
pilot valve interface	co-ax / NAMUR ISO 1
actuator ports	2/4 G 1/8 G 1/4

hydraulic specifications

	options
actuation pressure range	bar 10-30 / 30-60
control	preferably 4/2-way control valve
actuator ports	X/Y G 1/4 NPT 1/4

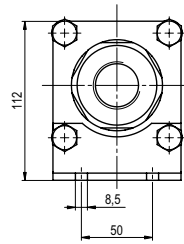
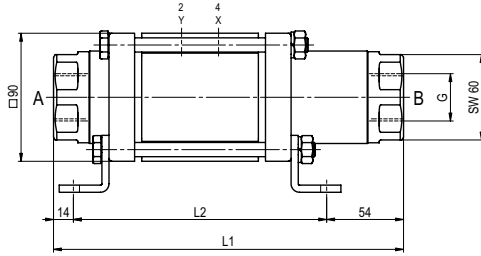
⚠ The valves' technical design is based on media and application requirements. This can lead to deviations from the general specifications shown on the data sheet with regards to the design, sealing materials and characteristics.

⚠ If order or application specifications are incomplete or imprecise there exists a risk of an incorrect technical design of the valve for the required application. As a consequence, the physical and / or chemical properties of the materials or seals used, may not be suitable for the intended application.

■ specifications not highlighted are standard
 ■ specifications highlighted in grey are optional

type VMK 25

function: **NC**
closed when not energized

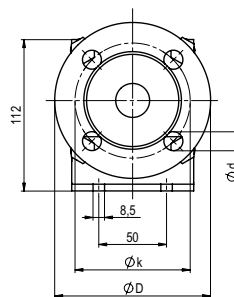
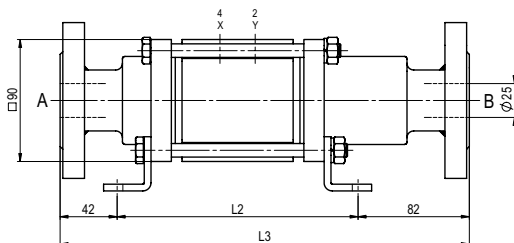


constructive length	L ₁	L ₂	L ₃
standard	246	178	302
with 1/2 inductive limit switches	260	192	316
with force-feed lubrication nipple	276	208	332
with mechanical limit switches	270	202	326

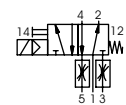
flanges PN	DIN	ϕD	ϕk	ϕd
16	2633	115	85	14
40	2635	115	85	14
100	2637	140	100	18

type VFK 25

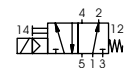
function: **NO**
open when not energized



pneumatic actuation (separately)



5/2-way-pilot valve
flow rate 700 l/min
pressure range 3-10 bar G 1/8



5/2-way-pilot valve ISO 1
flow rate 700 l/min
pressure range 3-10 bar G 1/4

The application-specific layout relating to temperature, pressure conditions, switching behavior, media and its consistency may restrict the range of use or necessitate relevant modifications to materials used and seal arrangements.

Rights reserved to make technical alterations • Not responsible for printing errors • Detailed drawings can be obtained upon request