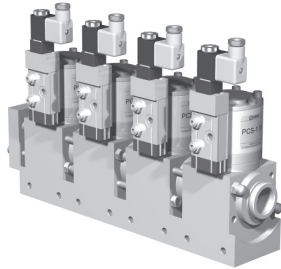
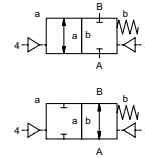


module

type PCD-1/2 10/15 PCS-1/2 10/15



2/2 way valve externally controlled
pressure range PN 0-200 bar
orifice DN 10/15 mm
connection thread
function valve normally closed symbol **NC**
 valve normally open symbol **NO**



⚠ Above stated body materials refer to the valve port connections that get in contact with the media only!

details needed

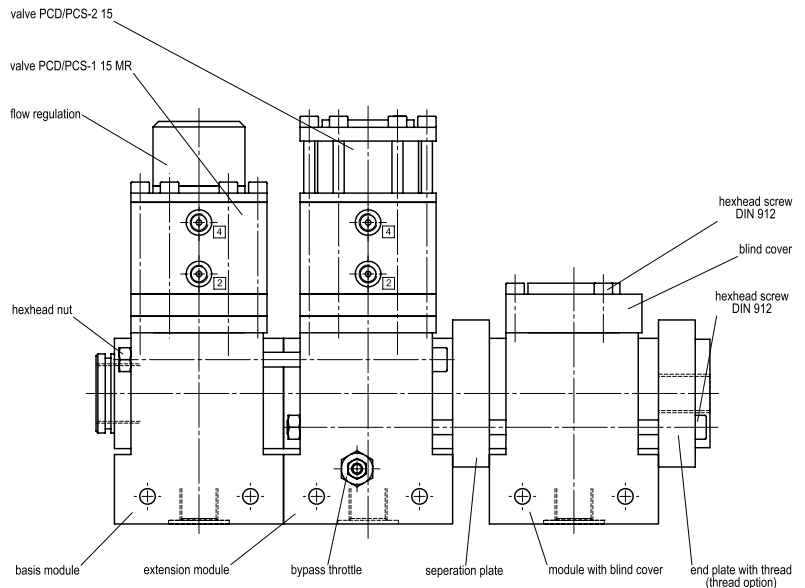
- orifice
- port
- function NC/NO
- operating pressure
- flow rate
- media
- media temperature

general specifications

type	PCD-1/2 10	PCS-1/2 10	PCD-1/2 15	PCS-1/2 15
port thread valve	G 1/2	1/2	3/4	3/4
port thread module	G 3/4	3/4	1	1
function	NC / NO	NC / NO	NC / NO	NC / NO
pressure range	bar 0-200	0-200	0-200	0-200
orifice	DN 10	10	15	15
media	gaseous - liquid - highly viscous - gelatinous - pasty - contaminated			
media temperature	°C -10 to +150	-10 to +150	-10 to +150	-10 to +150
switching time	ms opening 30-3000 closing 30-3000	opening 30-3000 closing 30-3000	opening 100-3000 closing 100-3000	opening 100-3000 closing 100-3000
body materials valve	①			
	②			
	③			
	④			
	⑤			
	⑥	stainless steel	stainless steel	stainless steel
	⑦	aluminium	aluminium	aluminium
body materials module	EPDM, PU, FPM			
seal materials	synthetic resin on metal / metal on metal			
valve seat	externally controlled with spring return			
design				

⚠ The valves' technical design is based on media and application requirements. This can lead to deviations from the general specifications shown on the data sheet with regards to the design, sealing materials and characteristics.

⚠ If order or application specifications are incomplete or imprecise there exists a risk of an incorrect technical design of the valve for the required application. As a consequence, the physical and / or chemical properties of the materials or seals used, may not be suitable for the intended application.



■ specifications not highlighted are standard
 ■ specifications highlighted in grey are optional

type module PCD/PCS-1/2 10/15

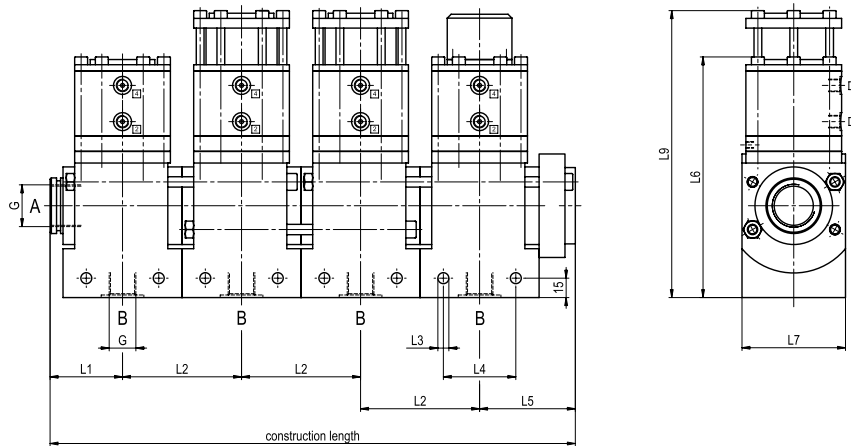


chart with dimensions

type	L1	L2	L3	L4	L5	L6	L7	L8	L9
PCD-1/2 10	43,5	70	ø6,4	41	63	175	65	17,5	205
PCS-1/2 10	43,5	70	ø6,4	41	63	175	65	17,5	205
PCD-1/2 15	56	92	ø8,5	56	74	186	80	20	221,5
PCS-1/2 15	56	92	ø8,5	56	74	186	80	20	221,5

chart with overall length

type	1-station	2-station	3-station	4-station	5-station	6-station	7-station	8-station
PCD-1/2 10	106,5	176,5	246,5	316,5	386,5	456,5	526,5	596,5
PCS-1/2 10	106,5	176,5	246,5	316,5	386,5	456,5	526,5	596,5
PCD-1/2 15	130	222	314	406	498	590	682	774
PCS-1/2 15	130	222	314	406	498	590	682	774

